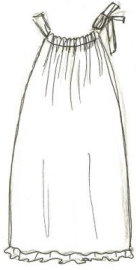
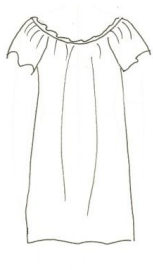


**NIGHTIES**



Style 1208

Mimi Side Tie Nightie  
\$42/\$65\*



Style 1310

Juliette Nightie  
\$42/\$65\*



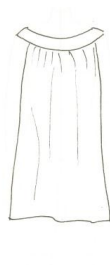
Style 1212

Vionnet Bias Nightie  
\$45/\$75\*



Style 1216

Empire Nightie  
\$42/\$65\*



Style 1218

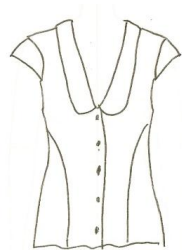
Yoked Nightie  
\$42/\$65\*

**TOPS**



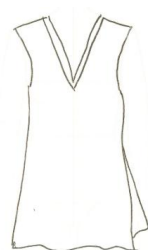
Style 2204

Side Tie Top  
\$30/\$50\*



Style 2312

Button Front Top  
\$35/\$55\*



Style 2214

Sleeveless Tunic  
\$30/\$50\*



Style 2210

Empire Top  
\$30/\$50\*



Style 2306

Gypsy Top  
\$35/\$55\*



Style 2218

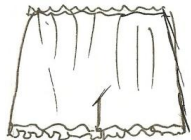
Bralette  
\$20/\$30\*

**BOTTOMS**



Style 3010

Drawstring Pant  
\$30/\$45\*



Style 3002

Sprite Bloomer  
\$20/\$25\*



Style 3008

Tap Short  
\$20/\$25\*



Style 3006

Whimsy Panty  
\$15/\$15\*



Style 3014

String Bikini  
\$15/\$15\*



Style 3012

Thong Panty  
\$15/\$15\*

**ROBES**



Style 4008

Long Kimono Robe  
\$75/\$115\*



Style 4006

Short Kimono Robe  
\$60/\$100\*



Style 4002

Butterfly Flounce Robe  
\$60/\$100\*

\*100% cotton voile price/100% silk charmeuse price

2

Collection I 2011  
100% cotton and 100% silk available in XS, S, M, L

*Toute la Nuit*  
LOUNGEWEAR

[info@tlnlounge.com](mailto:info@tlnlounge.com)  
[www.tlnlounge.com](http://www.tlnlounge.com)